



Jefferson Elementary Music Room

Mark Hansen, Principal
Paul Weller, Music Specialist

11331 Jefferson N.E. Blaine, MN 55434
Phone: 763-506-2968 Email: paul.weller@anoka.k12.mn.us

Name: _____

Class: _____

Singing:

Written:

September 24, 2019: Song Transcription - Paige's Train

1. Write in the solfège under the rhythm for the song "Mouse Mousie"

1 ♪	2 ♪	3 ♪	4 —	1 ♪	2 ♪	3 ♪	4 —	1 ♪	2 ♪	3 ♪	4 ♪	1 ♪	2 ♪	3 ♪	4 —
—	—	—		—	—	—		—	—	—	—	—	—	—	
Pai	ge's	train		Runs	So	fast		Can't	See	nothing	But the	Win -	dow	Glass	

2. Use the SPACE rule and put your do mi and sol on lines (put letters in the circles)

0	1	2	3	4	1	2	3	4	1	2	3	4	1	2	3	4	

3. Transfer (drag and drop) the rhythms to the correct place on the staff

4. Check your staff work with 2 people

- ◆ Are the notes big enough?
- ◆ Are the notes in the right spot?

Checker 1: _____

Checker 2: _____

5. Sing for Parents

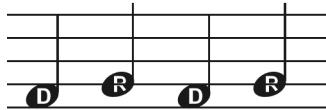
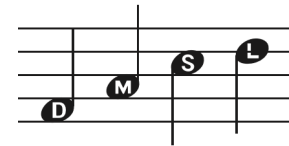
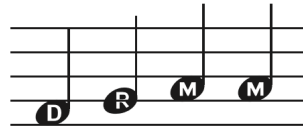
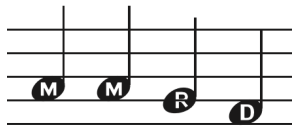
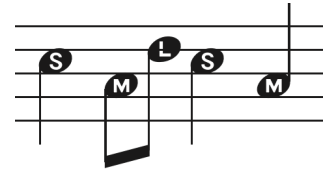
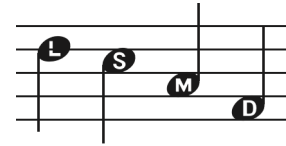
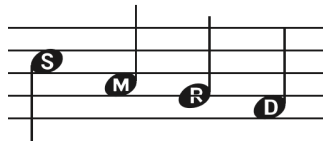
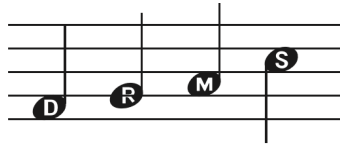
Parent Signature: _____

**For full credit
return to the
music room
within one
week**

B-Section Improvisation Section

Create your own melody using these boxes and writing one chunk in each. Write out the rhythm if you need to.

No need to do anything with this at home



Rhythms to use to make ideas fancy: ♩ ♪ ♫ ♮

a		a		a		b	

a		b		a		b	